

Sheep Hooded Baby Sweater

by Lynda Davies

SIZES: Directions for size 1. Changes for sizes 2 and 3 are in parentheses.

- Body Chest Size: 20" (21", 22")
- Blocked Chest Size: 21½" (22½", 23½")

MATERIALS: Knitting Worsted, 2 4-oz. skeins main color (MC), 2 oz. contrasting color (CC) and 1 oz. black (B). Knitting needles numbers 5 and 8. Four stitch holders. Five buttons.

GAUGE: 9 stitches = 2": 6 rows = 1" (number 8 needles).

SHEEP PATTERN: Working in stockinet stitch (k 1 row, p 1 row) follow pattern or design your own.

CARDIGAN: Neckband: With MC and number 5 needles, cast on 55 (59, 63) stitches. Work in ribbing of k 1, p 1 for 1". Change to number 8 needles. Following Yoke Chart work as follows:

YOKE: Shape Raglan:

Row 1 (right side): K 9, increase 1 stitch (M1), put a marker on needle, k 1, increase 1 stitch (M1), k 6 (7, 8), increase 1 stitch (M1), put a marker on needle, k1, increase 1 stitch (M1), k21 (23, 25), increase 1 stitch (M1), put a marker on needle, k 1, increase 1 stitch (M1), k 6 (7, 8), increase 1 stitch (M1), put a marker on needle, k 1, increase 1 stitch (M1), k 9. There are a total of 8 increases. (Stitches between first and 2nd markers form left sleeve: stitches between 3rd and 4th markers form right sleeve.) Turn.

Row 2: Slipping markers, purl.

Row 3: * K to within 1 stitch of marker, increase 1 stitch in next stitch (M1 right slant), slip marker, k 1, increase 1 stitch in next stitch (M1 left), repeat from * 3 times, k across. Repeat last 2 rows 10 (11, 12) times.

Next Row: Purl – 151 (163, 175) stitches.

Divide Work: With MC, K 21 (22, 23), place these stitches on a holder (left front): k 32 (35, 38) (left sleeve): place next 45 (49, 53) stitches on a holder (back): place next 32 (35, 38) stitches on a 3rd holder (right sleeve): place last 21 (22, 23) stitches on a 4th holder (right front).

LEFT SLEEVE: Cast on 2 stitches, purl across, cast on 2 stitches 36 (39, 42) stitches. Decrease 1 stitch each side every 8th row 2 times, then decrease 1 stitch each side every 6th row 3 times 26 (29, 32) stitches. At same time, when sleeve is 4 rows less than desired length before ribbing, work Sleeve Chart pattern. Sleeve measures 6" (6½", 7") from underarm or 1½" less (cuff allowance) than desired sleeve length. Change to number 5 needles. Work k 1, p 1 ribbing for 1½". Bind off loosely in ribbing.

RIGHT SLEEVE: With number 8 needles, cast on 2 stitches: from right side, k 32 (35, 38) stitches from sleeve holder, cast on 2 stitches 36 (39, 42) stitches. Work same as left sleeve.

BODY: Slip stitches of left front on number 8 needle. Join yarn at left underarm, cast on 4 stitches, k across back stitches, cast on 4 stitches, k across right front stitches 95 (101, 107) stitches. At same time, when body is 14 rows less than desired length before ribbing, work Body Chart. Body measures 5¾" (6¼", 6½") from underarm or 1½" (ribbing allowance) less than desired length. Change to number 5 needles. Work in ribbing of k 1, p 1 for 1½". Bind off loosely in ribbing.

LEFT CENTER BAND: From right side, with MC, pickup and knit stitches on left front edge (for girl, right for boy). Test to find out how many stitches are needed so the front lays correctly. Knit 1, purl 1 for 5 rows. End off.

RIGHT CENTER BAND: Work 2 rows on right front edge as for left center band. With pins mark position of 5 buttonholes evenly spaced on right center band, first one ¾" above lower edge, 5th one ¾" below neck edge.

Row 3: (buttonhole row): * Knit/purl to within 1 stitch of pin, bind off 2 stitches, repeat from * 4 times, finish row.

Row 4: Knit/purl across row, casting on 2 stitches for each buttonhole.

Row 5: Knit/purl across including cast-on stitches. Bind off.

HOOD: Beginning at front edge, with MC and number 5 needles, cast on 67 (69, 71) stitches.

Row 1: (right side): P 1, * k 1, p 1, repeat from * across.

Row 2: K 1, * p 1, k1, repeat from * across. Repeat last 2 rows for 1½", end wrong side. Change to number 8 needles.

Work Hood Chart for 4 rows. Work MC in stockinet stitch until piece measures 6 ½" (7", 7 ½") from start.

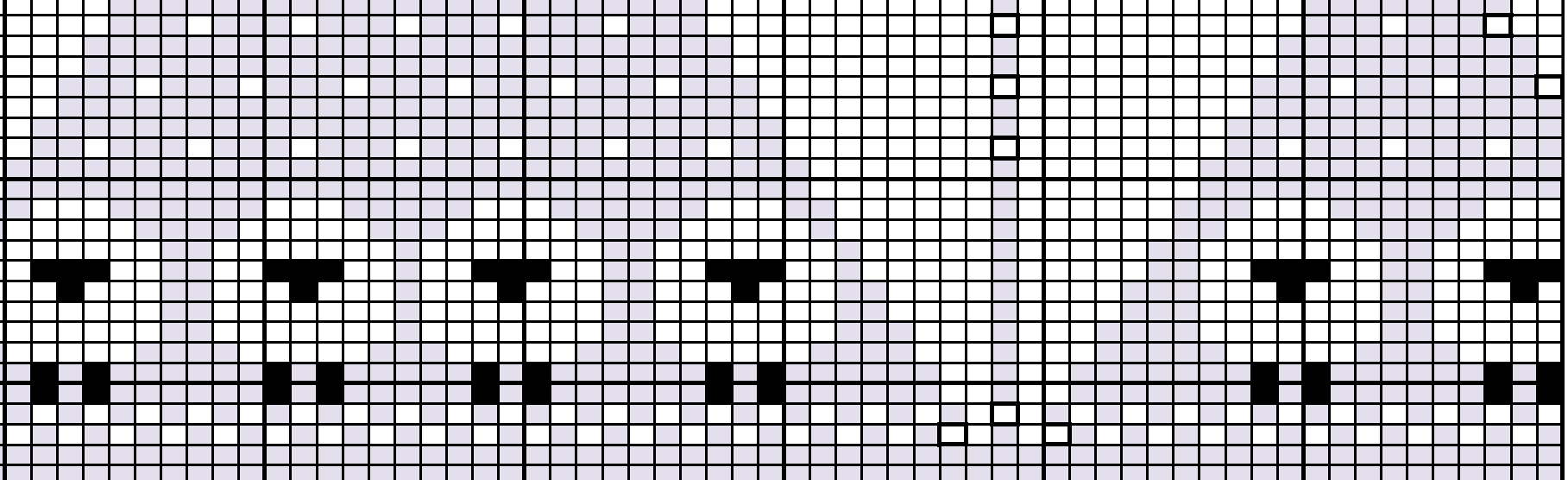
Shape Back: Bind off 10 stitches at beginning of next 2 rows. Bind off remaining 47 (49, 51) stitches.

FINISHING: Block pieces. Fold hood in half: weave back seam, keeping seam flat. With ends of hood ¾" in from front edge of sweater, sew hood to neck edge, easing in hood. Sew sleeve seams and underarms. Sew on buttons.

Note: It is helpful to turn the charts upside down since the sweater and pattern are worked top down.

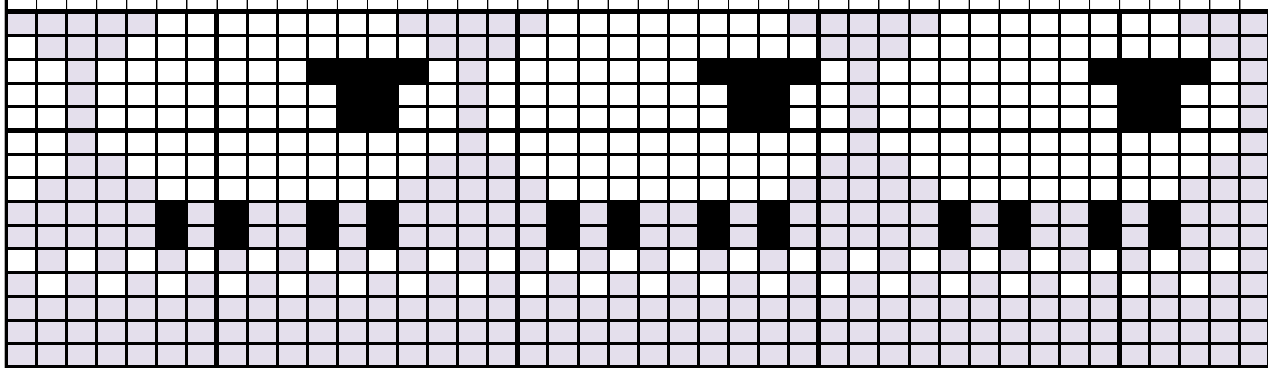
Ribbing-Main Color - 1"

Ribbing-Main Color - 1"

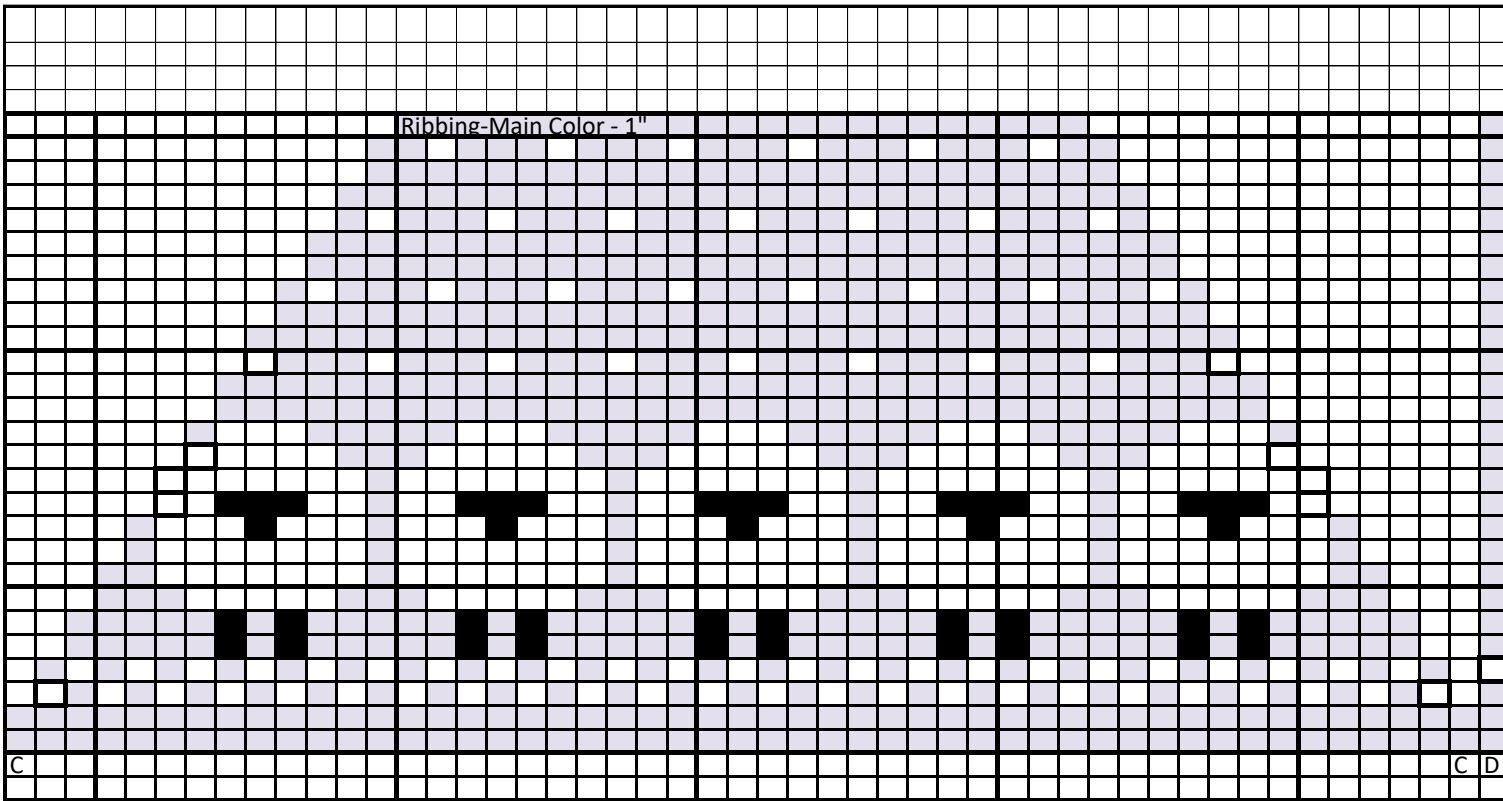


C

C D

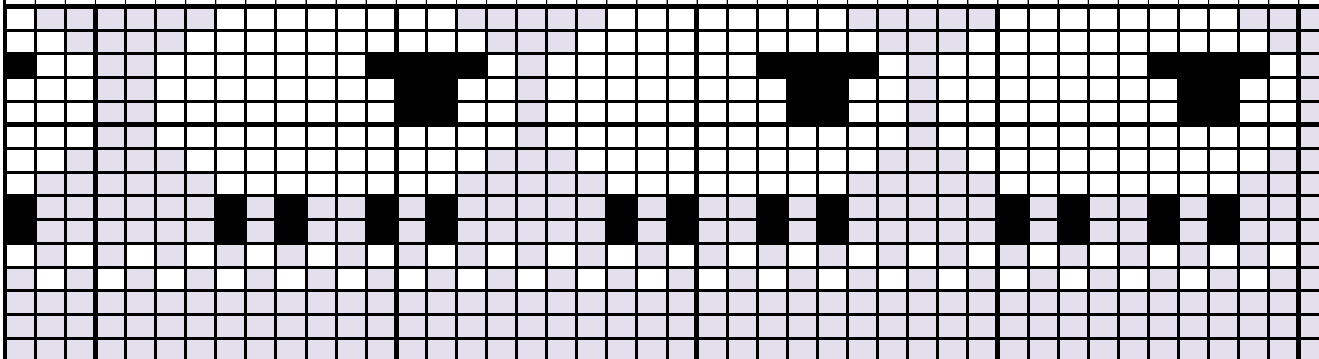


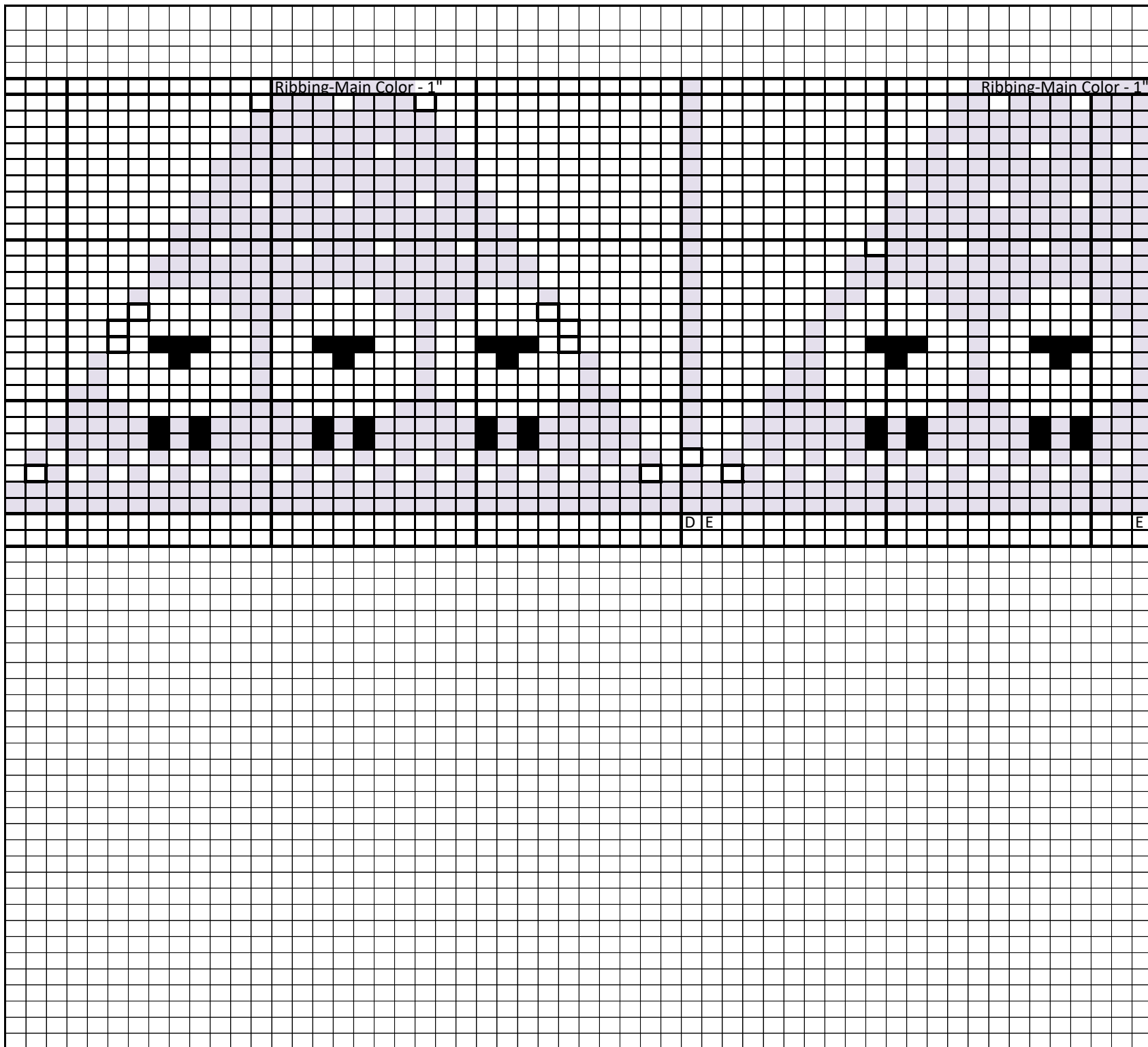
Ribbing-Main Color - 1"



C

C D





Sheep Hooded Baby Sweater - Size 3

No. of Stitches	Row	Yoke
63		Ribbing-Main Color - 1"
71	1	
	2	
79	3	
	4	
87	5	
	6	
95	7	
	8	
103	9	
	10	
111	11	
	12	
119	13	
	14	
127	15	
	16	
135	17	
	18	
143	19	
	20	
151	21	
	22	
159	23	
	24	
167	25	
	26	
175	27	
	28	
		A B B

Sleeve

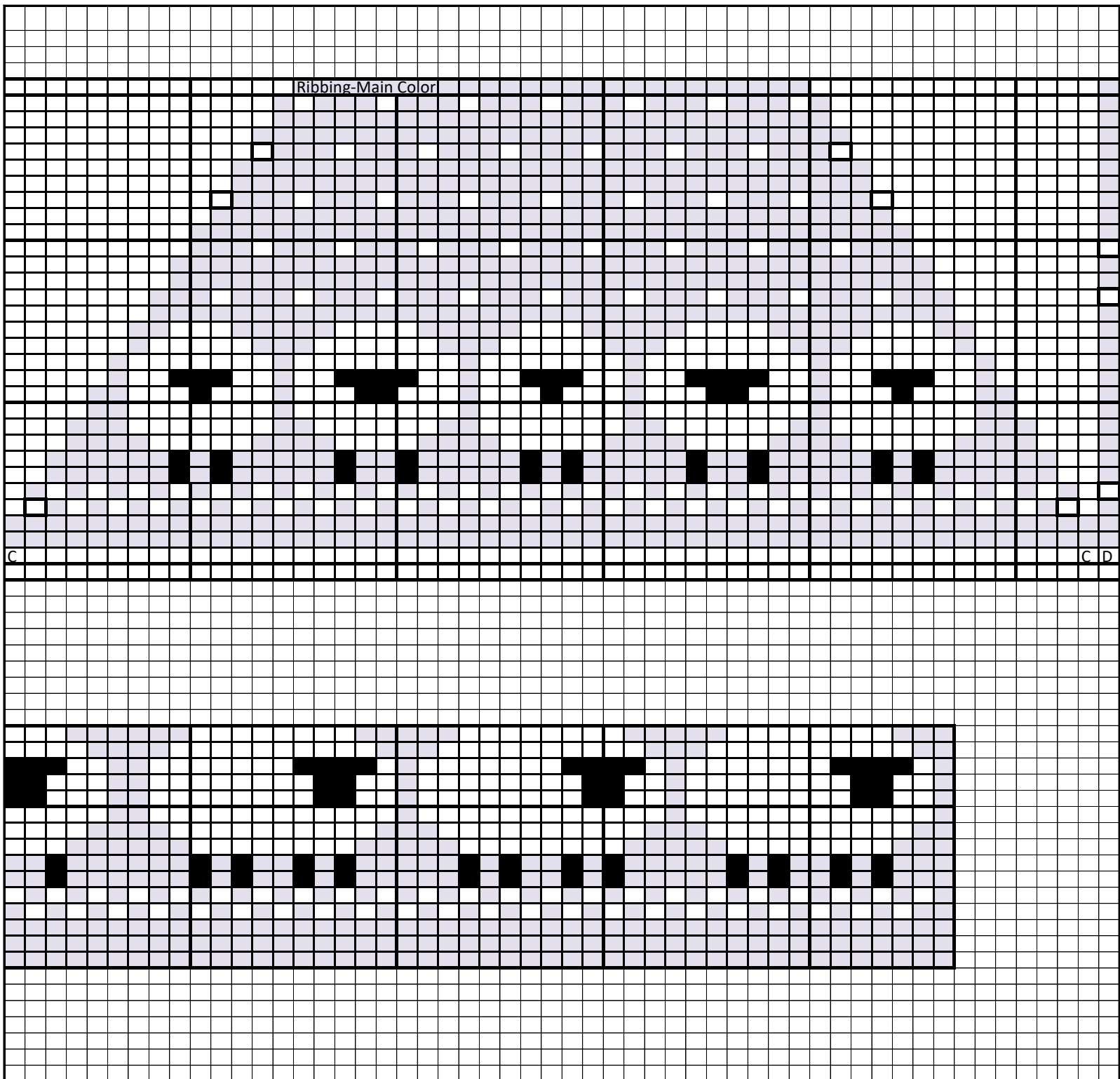
Ribbing-Main Color - 1.5"

Body

Ribbing-Main Color - 1.5"

Hood

Ribbing-Main Color - 1.5"



Ribbing-Main Color

C

C D

